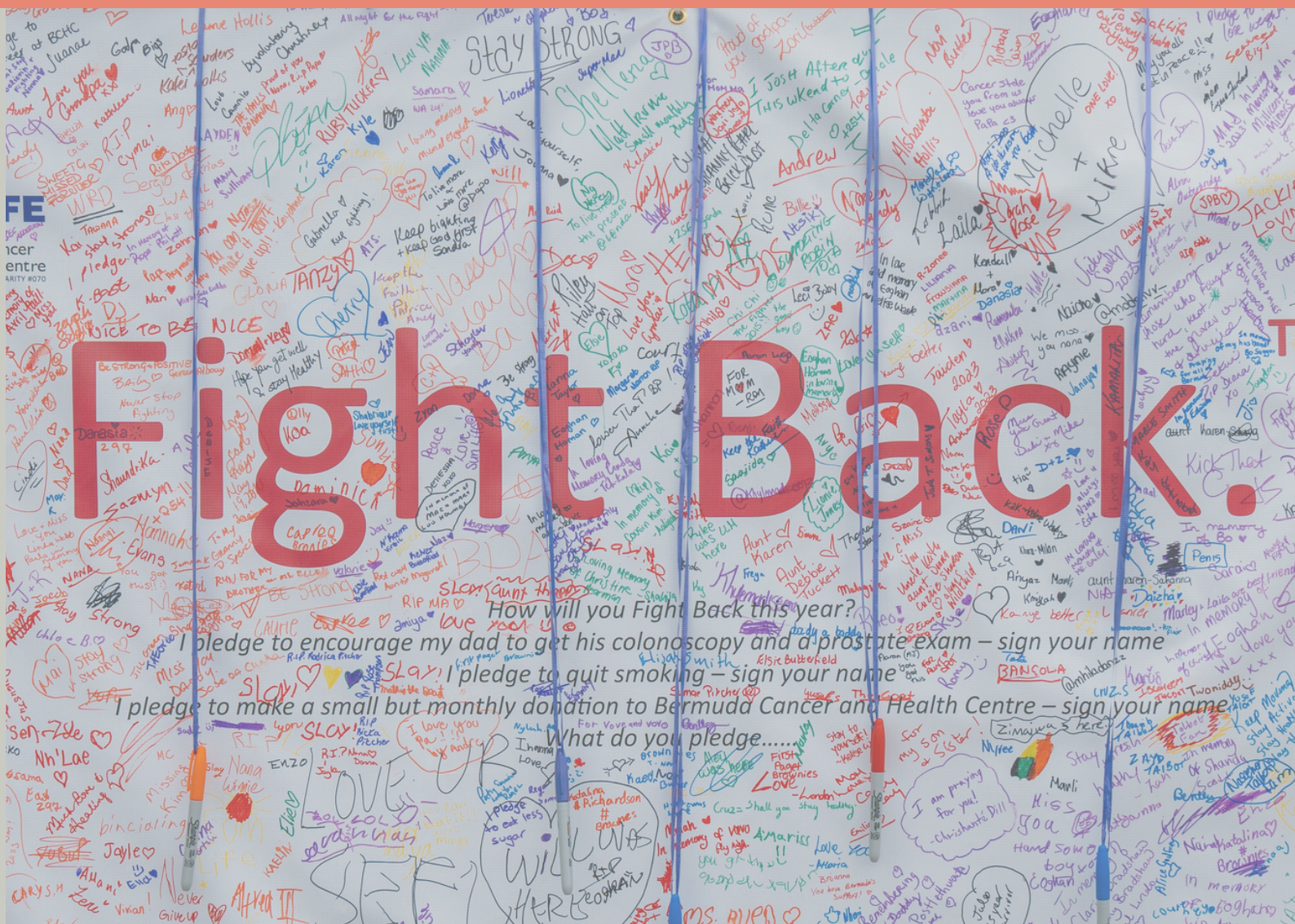




**Bermuda Cancer  
and Health Centre**  
BERMUDA REGISTERED CHARITY #070

# 2023

# Impact Report



# Hello we are Bermuda Cancer and Health Centre.

As an independent local charity, our roots trace back to 1945 when we were founded by an Act of Parliament with a primary focus on combating tuberculosis. Over the years, our mission has evolved to address the pressing issue of cancer within our community.

Today, Bermuda Cancer and Health Centre stands proudly at the forefront of the effort against cancer. We are committed to offering comprehensive cancer prevention education, early detection services for breast cancer, radiation treatment for various forms of cancer, and unwavering support for patients, their families, and the healthcare professionals involved in their care.

Our team comprises highly qualified medical professionals alongside dedicated support staff, spanning roles from billing to compliance, marketing, and fundraising. Each member of our team is drawn to the Centre by the meaningful work we undertake in supporting individuals affected by cancer. Together, we are committed to making a tangible difference in the lives of those navigating the challenges of cancer diagnosis, treatment, and recovery.

**We believe in empowering individuals to prioritise health and wellness, rather than stressing over how to navigate and afford world-class cancer care.**

# Welcome



Welcome to the Bermuda Cancer and Health Centre's 2023 Impact Report. As we reflect on the past year, we are thrilled to share the remarkable strides we've made in delivering vital services to those affected by cancer in our community.

Throughout 2023, the Centre remained steadfast in its mission to provide unparalleled care, spanning from cancer prevention education to early detection, treatment, and support services. This report encapsulates the profound impact our collective services have had.

## Milestones achieved in 2023:

- Dr Chris Fosker moved to the Centre full-time as Medical Director, in line with strategic plans.
- Our Equal Access Fund subsidised the cost of services for **56% more individuals** than in 2022, allowing them to prioritise their health over financial concerns.
- Notably, our cancer prevention programmes saw significant growth, reaching over **22% more individuals** in our community with essential messages aimed at reducing cancer risk.
- Our fundraising efforts, buoyed by unwavering community support, raised **\$1.66 million** to help support the equal access fund, ensuring equitable access to our services with \$0 out of pocket costs, allowing individuals to prioritise their health without financial burden.

- Implemented a Cancer Navigator role to support physicians and their patients diagnosed with cancer.
- Hosted a highly successful 10th year of Relay For Life.
- Progressed resolution of staff challenges with hiring of additional staff.

We are pleased and honoured to be able to report that our patients feel we conduct ourselves professionally and respect their privacy:

- An impressive **98%** of our patients rated our professionalism as either good or excellent, with **96%** specifically ranking it as excellent.
- An outstanding **99%** of our patients rated the respect for their privacy as good or excellent, with **88%** specifically rating it as excellent.

None of these accomplishments would be possible without the steadfast backing of our community. Our supporters and donors remain the heart of our organisation, the foundation upon which we build, and the essential pillars enabling our impactful work. We deeply thank them for their unwavering enthusiasm, energy, and support.

We also commend our exceptional team at the Centre and our dedicated volunteer board of directors. Their unwavering commitment to our cause and those we serve is valued. We continue to achieve excellence in service delivery through the collective dedication of our team and supporters alike.

Thank you for standing alongside us as we strive to make a meaningful difference in the lives of those affected by cancer in Bermuda.

**Glen Gibbons**  
President of the Board

**Lynne Woolridge**  
Chief Executive Officer

# Our Vision

At Bermuda Cancer and Health Centre, we believe that access to prevention information, early screening, and treatment are essential components in the fight against cancer. Given that, 30-50% of cancers are said to be preventable through proactive measures, and that early detection significantly increases survival rates, we are committed to ensuring these resources are accessible to all.

As an independent local charity, our mission is clear: to offer **free cancer prevention education** and **clinical services that exceed international standards, without any out-of-pocket expenses**. We also **subsidise the cost of services** to ensure that those with insufficient health insurance coverage can still access our services. We believe that financial constraints should never prevent anyone from receiving life-saving screenings, diagnoses, or treatments.

Imagine the critical distinction between keeping a routine screening mammogram and foregoing it due to financial concerns. This seemingly small decision could be the

determining factor between detecting cancer at an early, treatable stage or a more advanced, less manageable stage. At Bermuda Cancer and Health Centre, we are dedicated to ensuring that financial barriers do not stand in the way of life-saving care.

Our vision is crystal clear: we aspire to serve our community by fostering healthier lives, free from the burden of cancer and disease.

“Together, let us continue to work towards ensuring that every individual has the opportunity to access the care and information they need for a healthier future.”



# Our Mission

Is to provide the highest standard of early detection, treatment, support, care and education for cancer and other diseases to all.

To achieve this we:

- Enable patients to focus on health & well-being rather than stressing over how they can afford potentially lifesaving care.
- Provide world-class services at lower costs than top-ranked facilities overseas,.
- Have an onsite radiologist, available to speak with diagnostic imaging patients and their physicians about potential breast cancer diagnoses.
- Introduced the role of Cancer Navigator to improve patient care by working with physicians to ensure seamless transitions between specialists and reducing wait times between appointments.
- Launched the internal Clinical Strategy Group (CSG) to oversee the Centre's clinical needs and drive intentional development.
- Have a team of highly trained professionals who work closely to provide individually tailored support at critical times, following a unique evaluated model of care.
- Provide ongoing training and development to ensure all staff stay abreast of current protocols and techniques. This is especially important on a small island without relevant peer-to-peer opportunities.
- Offer services that have zero out-of-pocket costs or are free of charge to the patient and their family or friends.
- Host multi-disciplinary teams (MDTs) meetings of medical professionals to review breast cancer cases. Every tumour has unique traits causing some to respond better to different treatments. The MDT collectively determine the best treatment path for each individual.
- Work collaboratively with PALS, BHB, hospices and primary care providers to ensure the highest quality of care for people affected by cancer.
- Empower people to feel more in control, more confident, and more capable of advocating for their well-being by alleviating the worry and stress of out-of-pocket payments.
- Continue to voluntarily achieve external accreditations to benchmark the work we do against international standards.

'Compares well with my experiences at overseas first-class facilities, with no out of pocket expenses. My appointment was on time and I was back at my desk without missing a beat.'

# Our Achievements

## Equal Access

Thanks to corporate and community donations the Centre's Equal Access Fund represents a powerful commitment to equity in cancer care. Through this fund, **1,784 people**, regardless of financial circumstances, were provided access to **\$1.9M of vital cancer services** from mammograms to radiation therapy. By removing barriers and providing financial support, we empower our community to fight cancer together.

## Bringing Cancer Care Home

In 2023, **227 individuals were able to receive radiation therapy right here in Bermuda**, avoiding the need to spend weeks away from their loved ones and their daily lives, as was necessary before our Centre opened the Radiation Therapy unit in 2017.

## National Cancer Control Plan (NCCP)

After two years of work, the release of Bermuda's NCCP marks a pivotal milestone in our fight against cancer, outlining evidence-based approaches for prevention, detection, treatment, and support. Stakeholders will now work to implement the plan, collectively aiming to reduce the burden of cancer and improve Bermudians' well-being.

## Financial Transparency

Audited statements offer transparency into the charity's financial health, disclosing revenue, expenses, assets, and liabilities. We aim for transparency to build trust and encourage donors to support our work.

## Celebrating 10 Years of Relay For Life

Relay For Life of Bermuda celebrated its 10th anniversary, **raising over \$6.4 million** to combat cancer, including **\$833,973 from this year's event**. The first four years raised \$3 million, funding Bermuda's only radiation therapy unit. Today, Relay For Life continues to ensure financial barriers do not hinder access to essential cancer services, providing a safe space for survivors, their families, and the community to unite and fight back.

## Cancer Prevention

Our free cancer prevention programmes aim to inspire proactive behaviours and promote wellness within our community. By educating and empowering **11,000+ individuals**, we've taken significant strides toward a healthier Bermuda.



Piper Palmetto, spokes person for SunSmart Bermuda interacting with children at Relay For Life

# Meet John



John is a three time cancer survivor.

“My experiences with cancer started when I was quite young. I had thyroid cancer before I was 10 years old. That meant I was overseas getting treatment.

And then, more recently, in 2008, I was diagnosed with lung cancer. And again, I managed that overseas, with overseas doctors, as a male does or should do. At regular physicals, you watch your PSA, your prostate-specific antigen test, and it's not so much the absolute number but how it changes. And leading up to 2018, mine was increasing each year. So we started testing more frequently.

The PSA number started to rise. That led to a biopsy followed by surgery which took place at the end of 2018. The pathology from that was nothing other than perfect.

But two years later, my PSA level started to rise again, which meant that the prostate cancer was, in fact, growing. The upshot of that was, after scans and other tests, it was determined that radiation was the appropriate follow-up treatment.

So then the question became, where do we have it? I have had some medical challenges in my life. And I have sought professional assistance, help overseas, but in this particular case, there was no need to go overseas.

**“I found the treatment here, and I can assure you that from the research that I've done, I couldn't have done better elsewhere. And the bonus was, I got to live a normal life.”**

And for those 10 or 15 minutes every day, I was immersed in a world of professionalism, which one rarely sees anywhere. There was a sense of sadness I felt when, when the treatments were over. I mean, I was happy as anything, don't, don't misunderstand me.

But the therapist and nurses at Bermuda Cancer and Health Centre are really special people. They were caring and thoughtful. They are absolutely tremendous for all of us here in Bermuda. We should be proud of the folks who thought this through, put the money down, and brought radiation therapy in Bermuda to fruition.”

# Our Services

## Cancer Prevention

### Reached 11,168 community members

We're dedicated to reducing cancer incidence through education and prevention initiatives, as nearly half of all cancers are preventable. We prioritise empowering our community with knowledge about healthy lifestyle choices, regular screenings, vaccines, and early detection. Our free cancer prevention programmes, such as SUNSMART, Know Your Lemons, and LUNGSMART, target various demographics with tailored strategies for sun protection, breast health awareness, and lung health education. Through presentations, campaigns, and partnerships with schools, community organisations and events, we aim to instill a culture of proactive health management, ultimately reducing cancer risk and improving overall well-being. By raising awareness, dispelling myths, and encouraging open dialogue, we strive to enhance cancer survival rates and contribute to a healthier, more informed community.

## Early Detection

### Provided appointments for 11,629 community members

Timely cancer detection is crucial. Annual breast screenings detect cancer in asymptomatic individuals, while early diagnosis catches cancer at its earliest stages in symptomatic patients. We facilitate a smooth transition from screening mammograms to diagnostic imaging and breast biopsies as needed. Our onsite radiologist provides real-time readings, guiding patients and their physicians. For cancer diagnoses, the Centre hosts weekly multi-disciplinary team meetings to review and recommend treatment options.

## Treatment

### Provided radiation therapy for 227 community members

Our **radiation alliance with Dana-Farber Brigham Cancer Center** means that patients needing radiation no longer need to travel overseas to receive world-class care.

Radiation therapy sessions typically last 10–30 minutes, with most of that time spent positioning the patient on the table. These sessions will be daily and may be required for several weeks. Being able to have the support of loved ones, while still being able to work or pick the children up from school is a comfort during this stressful time.

## Supportive Services

### NEW in 2023

Bermuda Cancer and Health Centre offers patient support services to enhance patients' experience. Our Cancer Navigator meets patients and physicians early on in the cancer pathway, addressing questions and overcoming barriers from the time of diagnosis through to treatment and survivorship.

### Ongoing

For radiation therapy patients, individual needs are met based on cancer type and treatment course. We integrate services such as nutritionist and speech therapy into their pathway.

Patients receiving therapies report benefits including improved symptom management, reduced anxiety, and enhanced well-being, both in acute treatment stages and after treatment has ended.



# How we make a difference

## We provide a safe and welcoming environment

---

“I felt assured and safe, but mostly every step of the procedure was explained. The customer service was excellent!”

## We listen and respond to individual concerns

---

Dr Risk has been fantastic and understands the need to both do a mammogram and ultrasound on my dense breasts every year. It has dramatically reduced the anxiety of constant recalls for additional scans!”

## We help with symptom control

---

“The radiation therapy I received helped me to relax and de-stress, which in turn helped reduce pain and anxiety.”

## We alleviate fears

---

“Everyone is so friendly and personable. It’s a scary place to go to but the staff takes the fear away as soon as you go through the door.”

## We provide timely service

---

“As always, service at the Centre is convenient, excellent parking, very friendly and professional staff, but mostly, I'm in and out in no more than 15 minutes!!”

## We help people to feel more in control

---

“The staff did an excellent job of welcoming me, explaining the process, and making me feel at ease. I felt the technician was competent. The equipment had been upgraded, which made the process more comfortable.”

## We help to foster understanding

---

“Being able to meet with the doctor who answered my questions and explained what I could expect next was very reassuring.”

## We can help with a return to work

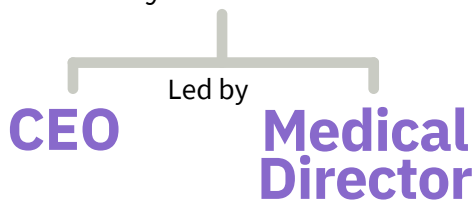
---

“The professional and friendly demeanor of staff. Being prompt/on time. Appointment time was markedly reduced on recent visit compared to previous visits.”

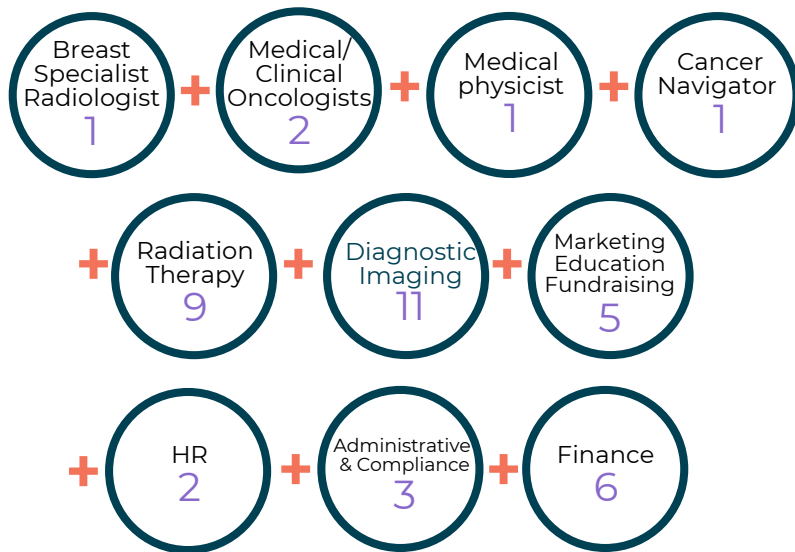
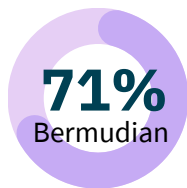
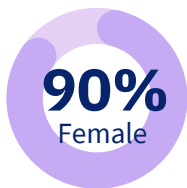
Our compassionate staff prioritise patients and outcomes, providing world-class services with state-of-the-art equipment. Comprising skilled professionals and dedicated support staff, drawn to meaningful work, each member is committed to making a difference in cancer care.

### 41 team members

overseen by a volunteer board of 12



supported by 5 person Senior Management Team



**2** state of the art 3D mammography machines providing screening, diagnostic imaging and biopsies.

**1** ultrasound machine homed in the private Mary-Jean Mitchell Green Ultrasound Suite, providing diagnostic imaging and breast biopsies.

**1** new bone densitometry machine, used to assess the strength of the bones and the probability of a fracture in persons at risk for osteoporosis.

**1** state-of-the-art True Beam™ linear accelerator which delivers the highest radiation dose in shorter sessions

### Accreditations

- Mammography services by the Canadian Association of Radiologists Mammography Accreditation Program
- American College of Radiology Accreditation for Radiation Therapy

### IMPACT

Our diverse team strengthens our ability to provide **high-quality, patient-centered care** and support to the **Bermuda community**, reflecting our commitment to **equity, inclusion**, and excellence in healthcare.

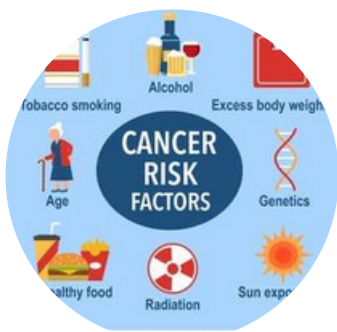
# Education

## Cancer prevention and wellness

Our cancer prevention programmes, funded partly by donations, play a vital role in reducing the burden of cancer within our community. By educating and empowering individuals, we promote early detection, risk reduction, and healthier lifestyles. Together, we are fortifying Bermuda against the impact of cancer. To find out more or to book a presentation visit [www.chc.bm](http://www.chc.bm).



Over  
**11,168**  
people  
reached in our community



Daily choices impact our cancer risk at any age. Through regular screening tests and vaccinations, individuals can lower their risk of various cancers. These practices not only reduce cancer risk but also improve overall health outcomes by helping to prevent other chronic diseases.



Our free breast health education programme Know Your Lemons, empowers individuals to detect breast cancer early, overcoming barriers like fear and affordability. By breaking down the 12 symptoms of breast cancer and teaching self-exams using lemons, the programme increases knowledge and awareness. Participants report improved understanding, contributing to community-wide breast cancer awareness and prevention efforts.



The SunSmart programme is provided free to schools and summer camps, teaching youth sun-safe behaviors to protect them in environments where they're most exposed to the sun. By educating youth on sun protection measures, we aim to reduce their risk of skin damage, premature aging, and skin cancers. Additionally, presentations are offered to adults to promote sun-safe habits and minimize sun exposure, preventing further skin damage and skin cancers.



Our free prostate health education combines viewing the documentary "The Silent Killer: Prostate Cancer in the African American Community" with a Q&A session. This documentary addresses the taboo topic of prostate cancer, dispelling myths and rumours about prostate exams and healthy eating through open discussion. Medical professionals provide guidance, and the documentary follows three African American men at different stages of prostate issues, encouraging open dialogue about their health.

# Early Detection

Screening mammograms and diagnostic imaging including breast biopsies and bone densitometry

Our Diagnostic Imaging Department plays a pivotal role in safeguarding the health of our community. Through routine mammogram screenings, diagnostic mammograms, ultrasounds, breast biopsies, and bone densitometry, we detect and diagnose health conditions early. By providing timely and accurate assessments, we empower individuals to take proactive steps toward better health outcomes.

10,210  
appointments

Digital 3D mammography remains the gold standard for early breast cancer detection.



Ultrasound is typically used as an adjunct to mammographic imaging, which remains the gold standard for breast cancer diagnosis



Both stereotactic and ultrasound-guided breast biopsies are available. Biopsies are the only way to diagnose breast cancer or other breast conditions.



10,097\*  
patients

1,274  
benefitted from Equal Access subsidisation

\*estimated number of patients seen that resulted in a billing

\$130,642  
worth of treatment costs were subsidised for 1026 underinsured patients

\$132,988  
worth of treatment costs were subsidised for 248 uninsured patients

We believe patients should be focused on health and wellbeing, not on whether they can afford treatment.

1,419  
appointments



Dexa scans measure bone mineral density, determining the risk of fractures, osteoporosis, and detecting cancer spread to the bones.

94% of appointments on-time or early  
We know our patients are busy, they report that appointments started on time or early!

## IMPACT

When breast cancer is detected early, and is in the localised stage, the 5-year relative survival rate is 99%.

# Treatment

## Radiation Therapy

Radiation therapy (RT), or radiotherapy, is a common cancer treatment that shrinks tumours using high-energy radiation. It can be used alone or with other therapies based on the patient's needs. Our radiation alliance with Dana-Farber Brigham Cancer Center ensures our RT unit provides treatment at international standards, using the same systems, software, protocols, and quality assurance programmes as Dana-Farber Brigham Cancer Center.

Patients should be focused on health and wellbeing, not on whether they can afford treatment.

**\$1,544,210**

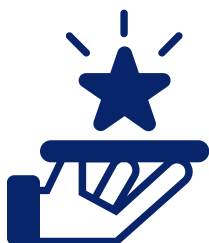
worth of treatment costs were subsidised for 199 underinsured patients

**\$99,042**

worth of treatment costs were subsidised for 23 uninsured patients

**100%**

of patients rated their overall experience as good or excellent, with 88% scoring excellent.



**227\***  
patients

**222**  
benefitted from  
Equal Access  
subsidisation



\*211 new treatments started plus 16 continuing from 2022

**6x** more access for palliative patients (previously rarely sent overseas)



**4x** more access to radiation therapy for those in our community with only HIP insurance and those who are uninsured



## IMPACT

Reducing the international travel burden by providing local **access and accessibility** means people in Bermuda are **2x more likely to receive recommended radiation therapy.**

# Meet Bernadette



Bernadette, esophageal cancer survivor.

"I was diagnosed in 2020 with esophageal cancer. Of course, that was devastating for me. I didn't, wasn't expecting that at all. I was actually sitting outside eating something, and I started choking and it wouldn't go down.

Doctor Warner, put a scope down and found a tumour that's sitting in my esophagus. He sent me to the oncologist, who made all the arrangements for my chemotherapy and radiation.

I had a few options, either to go away or get treatment here in Bermuda.

After the chemotherapy I chose to stay in Bermuda for my radiation therapy. I was initially quite surprised, to be honest, that they did radiation here in Bermuda and I decided, yes, I'll go ahead and get my radiation done here" opposed to flying overseas.

"I was really, really, really impressed. It was a great experience compared to when I had my radiation at Johns Hopkins years before, when I had cancer before."

Instead of flying overseas and having to pay all this money, you can get it done right here in Bermuda, and that would be my recommendation.

They know what they're doing. I know that Bermuda has a tendency or Bermudians have a tendency to think that, Oh, I'm getting away. I don't want to get anything medical done locally, but the team at Bermuda Cancer and Health Centre know exactly what they're doing.

Once my treatment was over, I walked out of there a happy woman, and I'm sitting here today because of it.

# Fund Impact

Core annual fundraising events

Fundraising events are crucial to our mission, sustaining our vital work and ensuring our success. They raise awareness, engage new supporters, and provide opportunities for our community to actively contribute to our mission. These events also boost donations, offer unique experiences, and create valuable opportunities for ongoing engagement, helping us make a lasting impact in the fight against cancer.



**Relay For Life of Bermuda  
presented by Liberty  
Mutual of Bermuda**  
5,404+ people  
helped raise \$833,792



**BF&M Breast Cancer  
Awareness Walk**  
1,974+ people  
helped raise \$137,286



**AXA XL Man on the Run 5k**  
396 men + 15 supporters  
helped raise \$36,850



**MOvember Bermuda™**  
17 men + 5 teams  
helped raise \$26,936

## IMPACT

Our sponsors and participants underscore the community's unwavering commitment to providing comprehensive cancer care for all by raising **\$1.1M for equal access**.

# Fund Impact cont.

## Importance of unrestricted funds

With increasing organisational objectives and services that don't generate income, fundraising for unrestricted funds is vital. Appeals, such as World Cancer Day and donations given to the annual appeal or in lieu of union dues, provide reliable support for the Centre's critical work, ensuring its sustainability and impact.

### World Cancer Day

Funds are raised through donation boxes, corporate and school denim days, and store round-ups supporting our cancer prevention programmes, which are valued at over \$128,000 annually and are provided free of charge to our community.

Our goal is to help people reduce their risk of being diagnosed with cancer during their lifetime.



Raised: **\$11,274**

### General Donations

By making a donation to our 'general' pot it means we can use these funds for any activities that don't fall in to a specific category. These funds are vital to us when emergency needs crop up.



Raised: **\$352,273**

### Give the Gift of Health - Annual Appeal

Every person who gives and every gift made is vitally important. Gifts of all sizes make a difference and are directed to our areas of most pressing need. All donors receive the satisfaction of knowing that their support helps the Centre provide the highest standard of early detection, treatment, support, care, and education for cancer and other diseases to all in need.

Raised: **\$21,865**

## IMPACT

Supporting our operating costs are crucial for flexibility and sustainability ensuring our essential services can continue, grow and develop.



# Meet Dave



Spotlight on Excellence: Dave Serratore MMP, DABR, Chief Physicist and Radiation Safety Officer at Bermuda Cancer and Health Centre

The Centre is dedicated to providing world-class care. This year, we highlight Dave Serratore whose role as a Medical Physicist has been pivotal in advancing our mission of delivering cutting-edge cancer treatment.

A Medical Physicist is a scientist who creates, implements, and monitors radiation therapy, ensuring the protection and safety of patients and others involved. Dave joined us with a Master's in Medical Physics from the University of Pennsylvania and a Bachelor of Science in Physics from Drexel University. His expertise spans various treatment platforms, such as Varian Linac, TrueBeam, and Gamma Knife.

Dave's professional experience includes his tenure at Temple University Hospital, where he managed clinical activities, HDR and GammaKnife treatments, treatment planning, and quality assurance.

"Before 2017, Bermuda residents could only receive radiation therapy if they had the time and funds to travel overseas for weeks. Thanks to tremendous support and collaboration, radiation therapy is now available in Bermuda. Through our radiation alliance with Dana-Farber Brigham Cancer Center, we provide world-class radiation therapy. I feel incredibly blessed to have been part of this initiative from the start and to work with such talented medical professionals."

His work at Urology Health Specialists saw him running the clinical environment as the sole on-site physicist.

Since joining the Centre, Dave has played a crucial role in ensuring our patients receive top-tier care close to home, without the need to travel overseas. His work is transforming cancer treatment in Bermuda, allowing patients to stay with their loved ones during therapy.

His innovative approach to solving complex problems in cancer treatment benefits our community immensely.

The Centre is fortunate to have Dave on our team. His expertise, dedication, and compassionate approach to patient care are integral to our success in providing exceptional cancer treatment.

# Financial Summary | A brief financial overview of January 2023 - December 2023

Total Revenue of \$16,841,023 is **up 11%** from 2022

Total Expenses of \$13,875,108 are **up 9%** from 2022

Resulting in Net Income of \$20,052,857 that **exceeds prior year by 22%**

Our 2023 audited financials can be found on our website or at the Centre.

## FIVE-YEAR FINANCIAL SUMMARY

Audited by KPMG Audit Limited

	December 31, 2023	December 31, 2022	December 31, 2021	December 31, 2020	December 31, 2019
<b>Revenues</b>					
Clinical services	14,546,182	13,122,570	13,759,367	10,219,174	11,495,853
Donations and fundraising	2,146,315	1,937,661	1,658,480	1,696,715	2,004,809
Dividends and interest	124,898	44,962	34,239	47,339	18,311
Other revenue	23,628	62,985	19,522	95,292	84,307
<b>Total revenue</b>	<b>16,841,023</b>	<b>15,168,178</b>	<b>15,471,608</b>	<b>12,058,520</b>	<b>13,603,280</b>
<b>Expenses</b>					
Staff expenses	6,400,959	5,309,016	4,914,803	4,223,879	4,129,375
Operating expenses	1,998,085	1,819,621	1,767,579	1,710,898	1,654,493
Clinical services	2,743,565	2,752,762	2,286,389	2,228,430	2,663,167
Donated services	1,849,368	2,098,253	2,236,931	1,955,630	1,734,351
Education programmes	82,730	47,368	48,574	15,104	89,551
Legal and professional	677,087	519,616	395,993	399,341	423,632
Marketing and fundraising	123,314	187,061	137,518	86,202	136,290
<b>Total expenses</b>	<b>13,875,108</b>	<b>12,733,698</b>	<b>11,787,787</b>	<b>10,619,484</b>	<b>10,830,859</b>
<b>Excess revenues (expenses)</b>	<b>\$ 2,965,915</b>	<b>\$ 2,434,480</b>	<b>\$ 3,683,821</b>	<b>\$ 1,439,036</b>	<b>\$ 2,772,421</b>
<b>Assets</b>	<b>22,929,491</b>	<b>20,710,351</b>	<b>19,090,757</b>	<b>16,803,937</b>	<b>15,936,616</b>
<b>Liabilities</b>	<b>2,876,634</b>	<b>3,623,410</b>	<b>4,438,295</b>	<b>5,835,296</b>	<b>6,407,011</b>
<b>Net assets</b>	<b>\$ 20,052,857</b>	<b>\$ 17,086,941</b>	<b>\$ 14,652,462</b>	<b>\$ 10,968,641</b>	<b>\$ 9,529,605</b>
Comprised of:					
<b>Unrestricted net assets</b>	<b>19,690,338</b>	<b>16,701,758</b>	<b>14,035,174</b>	<b>10,360,643</b>	<b>9,000,983</b>
<b>Restricted net assets</b>	<b>362,519</b>	<b>385,183</b>	<b>617,288</b>	<b>607,998</b>	<b>528,622</b>
	<b>\$ 20,052,857</b>	<b>\$ 17,086,941</b>	<b>\$ 14,652,462</b>	<b>\$ 10,968,641</b>	<b>\$ 9,529,605</b>

**\$1.9M**

The cost of providing Equal Access for under and uninsured.



**0%**

The proportion of our revenue we receive from the government.



**\$128K**

The current cost to provide cancer prevention programmes.



# Thank you

We are grateful to the following organisations that have supported our work over the last year. We appreciate their generosity.

## **Donations made In Honour of someone**

Monica Jones  
Lynda Leader  
Judy Swan  
Lynne Woolridge

## **Donations received In Memory**

Atwell, Enrique  
Burns, Kimberly  
Burull, Janet  
Butterfield, Antoinette  
Dean, Larry  
Dill, Patricia  
Fisher, Lynne  
Gaade, Anthony  
Hunter, Kyle  
Jones, Lionette C. P.  
Mahoney, Diana  
Mahoney, Patrick  
Mello, Lori  
Morris, Brian  
Neish, Barbara  
Peaman, Valerie Christine  
Perinchief, Claude  
Phillip, Janetta  
Pye, Deborah  
Ruse, Sheila  
Rynne, Gerald  
Scott, Dianne  
Seymour, Jennifer Rose  
Simmons, Michelle  
Smith, Gina  
Smith, Kenneth  
Somersall, Quida  
Spence, Shirley  
Warner, Venicia

## **Membership**

Drew, Michael & Terril

## **Union Dues**

Bermuda Hospitals Board  
Bermuda Motors Ltd.  
Cambridge Beaches  
Gorham's Limited  
Stevedoring Services Ltd.  
The Reefs

## **Gift In Kind**

Bermuda Blue Printing  
MediWaste  
Minors, Korie  
O'Celebrate Party Rentals  
Siese, Anthony  
Tristan Narraway Photography

## **Participants of our events and their peers who donated to support their efforts in:**

BF&M Breast Cancer Walk  
AXA XL Man on the Run 5k  
MOvember Bermuda™

## **THANK YOU to our amazing Relay For Life teams**

#SimonsStrong  
5 Alive - Duke of Edinburgh Award  
ACG Angels  
Ada Trott's Diamonds  
AFB Strikers  
All Night For The Fight  
Allied World  
Alpha Kappa Alpha Sorority, Incorporated  
Alpha Nu Omega, Inc. Bermuda  
Appleby  
Ark Insurance Limited  
Athora's Alpha Team  
AXIS  
BAC - Battle Against Cancer  
Barritts Ginger Bombers  
Bermuda Girl Guides  
Bermuda Bicycle Association  
Bermuda Hospitals Board  
Bermuda Sanshou Association  
Beyond The Badge  
BF&M Warriors  
BIU  
Boccia Bermuda  
Booby Traps  
Bougie FAITH  
BPSU Solidarity Striders  
Brown & Brown Cheetahs  
Butterfield Believers  
Carey Olsen Bermuda Limited  
CCS Road Warriors  
CG Crusaders  
Chubb  
Clarien Defenders  
Conduit Re  
Conyers  
Corks For A Cure  
Cowboys & Angels (The Phoenix Stores)  
Cymai's World  
Dana-Farber Brigham Cancer Center  
Decosta Strong  
Don't Stop Believin'  
EMMAon United  
Everest Walking Warriors  
EY  
Forever Flowers  
Friends Support For Life (FSFL)  
G-Force  
Haagen-Dazs Heroes  
Hamilton Princess Royals  
Health and People Committee  
Hiscox  
House of Possibilities  
I Walk Alone  
In Motion School of Dance  
Island Without Cancer (IWC)  
JBU Divas  
Jose's Garden: Blossoms of Hope

JU-GIRLS  
Kennedys  
Kickin' Cancer  
KPMG  
Lancashire Team Tango  
Liberty Group Ltd. / Belco  
Mac10Sports  
Making Strides  
Mary-go-rounds  
Mass General Brigham  
Medical House/BDA Restaurant Supply  
MSA Saints  
Norms Storm  
Paul's Legacy  
Price Forbes  
RenRe Avengers  
Rosewood Striders  
Saltus Grammar School  
Scouts Association  
Serve With Liberty  
Signor Strong  
SiriusPoint Bermuda  
Somersfield Stars  
SPEXX Eyecare Crew  
St. David's Variety  
Stormin' Norman  
Streaker's Spin Studio  
SunLifers  
Team AIG  
Team AME  
Team AXA XL  
Team Fidelis (FIGS)  
Team Kim  
Team Pitcher  
Team Prickly Pears  
Team Tompkins  
The Benchwarmers  
The Colon-Licks Never  
The Marlette's  
Tiny's Tribe  
Walking Club of Bermuda  
Warwick Academy  
When Survivors Unite, Hope Ignites  
XFC-Warriors

## **\$100,000 - 199,999**

Estate of Hueng Yuen Canton

## **\$10,000 - 99,999**

Applied Computer Technologies  
AXA XL Bermuda Ltd.  
Axis Capital Holdings Limited  
Bacardi International Ltd.  
BELCO - Liberty Group  
BF&M  
Campbell, John  
CG Coralisle Group  
Chronic Disease Innovation Programme  
Chubb  
Group Ark Insurance Limited  
Hannover Re (Bermuda) Ltd.  
KPMG  
Liberty Mutual Bermuda  
Mutch, Frank & Helen  
QBE Foundation  
Sun Life Financial  
Validus Reinsurance

# Thank you

## **\$1,000 - 9,999**

AIG Bermuda  
Albouy, Deborah  
Allied World Assurance Company Holdings  
AON Group (Bermuda) Ltd.  
Arch Reinsurance  
Ariel Re Bermuda Limited  
ASL Holdings Ltd.  
Aspen Bermuda Limited  
Barritt, Frederick  
Bermuda Fire and Rescue Service  
Bermuda Karting Club Ltd.  
Bethel A.M.E. Church  
Betts, Frances  
Birdies For Charity  
Butterfield and Vallis  
Carey Olsen Bermuda Limited  
Cedarbridge Academy  
Chubb Charitable Foundation Bermuda  
Clarien Bank Limited  
Conyers Imports Ltd.  
Cripps Foundation  
Dana-Farber Cancer Institute  
DeSilva, Sharon  
Enstar Limited  
Everest Reinsurance (Bermuda) Ltd.  
EY Bermuda Ltd.  
Francis Patton School  
Grant, Neville  
Grotto Bay Beach and Resort  
Hamilton Parish & Tuckers Town Welfare Trust  
Hiscox RE & ILS  
Holmes, Rosemary  
KPMG Mo Bros and Mo Sisters  
Lancashire Foundation  
Madeiros, Brian and Ruth  
Mahoney, Lauren  
Marion, Annarita  
McKean, Alan  
Mosaic Insurance Holdings Ltd.  
Mount Langton Water Aerobics Group  
Murphy, Elizabeth  
Ocean View Golf Club  
Ontrack Bermuda  
Perry, Penny  
Progressive Labour Party Women's Caucus  
Breakfast Cancer Awareness Forum  
PWC Bermuda  
Railton, Robert & Tara  
Resolution Re Ltd.  
Restless Native  
Rosewood Tucker's Point Golf Club  
RTR Portable Restrooms  
Seymour, John  
Sirius Point  
Tacklyn, Keith  
The Berkeley Institute  
The Green Family  
The Supermart Ltd.  
Wafra Financial & Management  
Services Limited  
Whaley, Anthony  
Willis Towers Watson

## **\$500 - 999**

Allianz Insurance  
Anonymous (19)  
Argo Insurance (Bermuda) Limited  
Barit, Hughe

Bascome, Jenson  
Bermuda Institute Of Seventh-day Adventist  
Brewer, Dr Martin  
Brown-Robinson, Joulanda  
Burt, Jane  
Chamberlain, Gail  
Conyers, Thomas  
Cosmic Ltd.  
Cubbon, George  
DeSilva, Cindy Marie  
DeSilva, Hataya  
DeSilva, Nataya  
Dickson, Katrina  
Gibbons Company Limited  
Gonsalves, Judy & Brian Kirkland,  
Harper Digital Entertainment  
Harrington Re. Ltd.  
Harris, Richard  
Harvey, Robin  
Joshua Bates Trading Bermuda Ltd.  
Kirland, Martha  
KPMG Bermuda  
Leseur, Barbara  
Leseur, Michael Kenneth  
Manders, Nikia  
Manson, Jeff  
Masters, Thomas & Robin  
Members Tent (World Rugby Classic)  
Miles Market / The Waterfront Group  
MJM Limited  
Mount Saint Agnes Academy  
O'Shea, Linda  
Ocorian Services (Bermuda) Ltd.  
Onionpatch Infant Academy  
Press, Keenan  
Rayclan Limited  
Reardon, Kathleen  
Richards, Pauline  
Robertson's Drug Store  
Schroders (Bermuda) Ltd.  
Schuler, Corlette  
Sherratt, Marian  
Simmons, Shawn  
Simpson, Lisa  
Simpson, Traddie  
Smith, Graham  
Smith, Newbold  
Soares, William  
Somerset Cricket Club, Inc.  
Steinhoff, Robert  
Stonex Financial Ltd. UK  
Waterfront Man  
Watson, Jane  
Witkowski, Janice

## **\$100 - 499**

Adcock, Cheri  
Aeolus Capital Management  
Amaral, Carolyn  
Anfossi, Elma  
Ashurst, David  
Attride-Stirling, Jennifer  
Attride-Stirling, Lucina  
Atwell, Cecily  
Atwood, Barbara  
Aubrey, Scott  
Bailey, Nick  
Barany, Holly  
Barnes, Jane

Bartlett, Beryl  
Bascome Family  
Baxter, Lorraine  
Bean, Joan  
Beck, Fiona  
Beek-Joell, Lillian  
Benn, Christine  
Bermuda Commercial Bank  
Bermuda Hockey Federation  
Bernhard, Keith  
Bird, Stephen  
Black, Kristina  
Blades, Nicole  
Booth, Mark  
Boyles, Conicca  
Breeze, Elizabeth  
Brewer, Timothy  
Brodsky, Peter  
Broudsky, Anna  
Burchall, Roderick  
Butler, Sioned  
Butterworth, Nicole  
Caldeon, Robert  
Cameron, Kiffinae  
Campbell, Laura  
Campbell, Nick  
Cann, Darren  
Cart, David  
Carter, Jonathan  
Carty, John  
Case, Kelsey  
Cassidy, Cheryl  
Cerra, Patrick  
Charles, Jene  
Chiozzi, Donna  
Chudleigh, Nigel & Diana  
Chung, Cherry  
Chung, Liane  
Clammer, Zac  
Clara Mohammed School  
Class Act Designs  
Clinton, Sally  
Cook, Lucy  
Coralis Group Ltd.  
Crockwell, Alena  
Crockwell, Cecily  
Croucy, Dave  
Cunningham, Liz  
Dalton E. Tucker Primary School  
Daniels, Kalila  
Dawson, Ana  
Davidson Leader, Lynda  
de Grouchy, Annabel  
De Melo, Leonardo  
Dellwood Middle School  
Department of Education  
DeSilva, Tina  
DeSouza, Suzanne  
Dias, Cynthia  
Didyk, Deanna  
Digicel Bermuda  
Dill, Lauren  
Dinsmore, Drew & Marianne  
Douglas, Charlotte  
Downing, Jane  
Doyle, Flavia  
Duffy, Catherine  
Dzurus, Ronnie  
East End Primary School

# Thank you

## \$100 - 499 continued

Ellison, Amy  
Emery, Terrylynne  
Endurance Specialty Insurance Limited  
Estey, Jeremy  
Everen Group  
Falcao, Victor  
Farak, Magda  
Faries, Carol  
Focke, Manfred  
Frith, Cecil  
Fullerton, Barbara  
Furbert, Denise  
Gaade, Gillian  
Gefaell, John  
Gerrior, Robert  
Gibbons, Christopher  
Gibbons, Drew  
Gibbons, James & Judy  
Gibbons, Kara  
Gilbert Institute  
Gilbert, Yvonne  
Gittens, Fran  
Gosling, Edmund  
Goslings Limited  
Griffith, Carolann  
Hall, Darin  
Hall, Kimberley  
Hamilton Princess & Beach Club  
Hardy Pickering, Vanessa  
Harris, Gary  
Harrison, Jeremy  
Harvey, Kay  
Harvey, Margot  
Harvey, Shelley  
Harvey, Veronica  
Hassell, Shannon  
Haynes, Peter  
Hendrickson, Shervin  
Hodsoll, Kelly  
Hovi, Angela  
Hunt, Joanne  
Hurst, Vivian  
Jennings, Joanne  
Jennings, Kentoine  
Johnson, Brenda  
Johnson, Nicole  
Jones, Jonah  
Joseph, Andrea  
Joslyn, Kimberley  
Juil, Jens  
Kehoe, Joanna  
Kelly, Elaine  
Kemp, Brendan  
King, Renee  
Leader, David  
Leclerc, Yan  
Lepercq, Françoise  
Lindo Perry, Betty  
Lindo, Monica  
Llewellyn, Evelyn  
Lombardi, Loredana  
Longworth, Linda  
Lovell, Aziza  
Lucas, Ron  
Lusher, Joy  
Lynch, Alistiar  
Madeiros, Alex  
Madeiros, Edward

Mahoney, Pamela  
MainPoint Real Estate Limited  
Maksymetz, Darren  
Market Place Ltd.  
Marshall, A  
Marshall, Ryan  
Martin, Dale  
Martin, Karan  
Martin, Re-Anna  
Mascarenhas, Vicente  
Masters, Jessie  
Matcham, Hilda  
Merritt, Chris  
Miller, Peter  
Miller, Tom  
Minors, Evelyn  
Mitchell, Carole  
Moniz, Jan  
Moore, Elizabeth  
Morrison, Timothy  
Moura, Debbie  
Murdoch, Joan  
Mushokoza, Benjamin  
Name First Last  
Nicoll, Sheila  
Olson, Karen  
Outerbridge, Kirstie  
Palmer, Tim  
Patin, John  
Pearce, Rhys  
Perinchief, Ann  
Perry, Rachel  
Pesci, Renato  
Pett, Lauren  
Petty, Keira  
Pimentel, Sally  
Pimm, Jean  
Ploebst, Monika  
Pontes, Erica  
QRS Ltd.  
Rankin, Mireille  
Raposo Tribley, Gail  
Ray-Rivers, Debi  
Rego, Ben  
Rego, Georgia  
Rego, Michael  
Richardson, Andrew  
Richardson, Denise  
Robinson, Jeanette  
Rocha, Helder  
Rocha, Luis  
Rock Island Cafe  
Roy, Tracy  
Ruse, Stephen  
Rynne, Anthony  
Saffer, Michael  
Sarker, Dilip  
Savoury, Saadie  
Schindel, Michael  
Selectron Ltd.  
Selley, Craig & Tina  
Sgobba, Christine  
Siggins, Kathryn  
Simmons, Kim  
Simmons, Lydia  
Simmons, Tracey  
Simons, Arlene  
Simons, Randolph  
Simpson, Natalie

Sims, Carol  
Singleton, Sallie  
Smith, Barbara  
Smith, Lovette  
Smith, Sherlyn  
Smith, Stephen  
Smith, Steven  
Snelling, Juliana  
Sompo International & Guy Carpenter  
Southern, Liz  
Steele, Scott  
Stevens, John  
Stirling, Jeff  
Stone, Kenneth  
Stubbs, Robin  
Subak, Kate  
Sukdeo, Harrichand  
Sulley, Ryan  
Tadman, Peter  
Take Five Ltd.  
Terceira, Emilly  
Terceira, Mary  
Thorsteinson, Thomas  
Thresh, Charles  
Transport Control Department  
Tremblay, Snjezana  
Trott, Gregory  
Trust, Corrada  
Tucker, Jacqueline  
Tucker, Judith  
Turcotte, Alexandra  
Turner, Cheryl  
Tyrrell, Simmonnette  
Vargas, Nikolai  
Velotti, Stephen  
Viera, Ronald  
Virgil, Alicia  
Wakely, Catherine  
Wales, Erika  
Walzholz, Jennifer  
Warwick Academy  
West, Sydney  
White, Judith  
Whitney Institute Middle School  
Williams, Pamela  
Winifred Frith, Barbara  
Wright, Benjamin  
Wright, Laura  
Yang, Jacqueline  
Young, Margaret

## Under \$100 - because every dollar counts

Adderley, Tina  
Ahanya, Yogi  
Amaral, Nicole  
Animals, Party  
Atwood, Margaret  
Austin, Jacklyn  
B, Lisa  
Bailey, Alize  
Balendran, Satish  
Barany, Mark  
Barber, Cindy  
Bardgett, Makenzie  
Bell, Dawnette  
Bellamy, Sam  
Bermuda Regulatory Authority  
Bhagwan, Dejonique

# Thank you

## **Under \$100 - because every dollar counts**

Big Bro  
Binns, Sinclair  
Bolin, Kim  
Boorman, Nicholas  
Bordeleau, Tyler  
Borges, Claudia  
Boyce, Bregitta  
Bradshaw, Kieran  
Brookes, Diana  
Brown, Alex  
Brown, Renee  
Brunson, Jasmine  
Bulford, Gail  
Burchall, Anne  
Burchall, Lawrence  
Burgess, Angelique  
Burgess, Crystal  
Burgess, Emma  
Burgess, Marie  
Burgess, Sharon  
Burke, Laila  
Burke, Samantha  
Butler, Angeline  
Butterfield, Debbie  
Butterfield, DonnaMaie  
Butterfield, Paula  
Cacace, Francesca  
Cannon, Hanah  
Carlington, Karen  
Carter, Susan  
Carvalho, Mark  
Cassidy, Darin  
Chan, Liam  
Chaves, Vincent  
Chisnall, Jennifer  
Clarke, Patricia  
Coelho, Matthew  
Collins, Sarah Jane  
Constable, Kevin  
Conyers, Caitlin  
Cook, Ian  
Cooney, Dylan  
Cooper, Rebecca  
Correia, Abigail  
Correia, Sean  
Crimmins, Paris  
Cross, Aisha  
Cross, Corrie  
Cumberbatch, Anderson  
Dagata, Morgan  
Daley, Andrew  
Daniels, Marsha  
Daniels, Mia  
Darrell, Donna  
Darrell, Khandice  
Davis, Zehena  
Day, Courtney  
Dean, Donna  
DeCouto, Douglas  
DeSilva, Angela  
Desilva, Veronica  
Dickinson, Gloria-Jean  
Diel, Karen  
Dill, Jill  
Dill, Kristin  
Dill, Linda  
Dill, Malcolm  
Dill, Robin  
Doard, Dee  
Dotson, Christina  
Douglas-Dill, Lisa  
Durrant-Thomas, Shalanda  
Dyer, Tanya  
Edwards, Llewellyn  
Esdaille, Taneé  
Esposito, Terica  
Evans, Beverly  
Evans, Hayley  
Eve, Robyn  
Eve, Rokeisha  
Falcao, Miguel  
Faulkenberry, Mary  
Faulkenberry, Tammy  
Fiandesio, Giselle  
Field, Susan  
Fisher, Cindy  
Fitzmaurice, Annette  
Fitzpatrick, Colette  
Flood, Karema  
Foster, Lindell  
Fox, Taja  
Francis, Roxanne  
Franco, Donae  
Francois, Chinna  
Francois, Kelly  
Frawley, Aine  
Furtado, Eleanor  
Gaglio, Rebecca  
Garnett, Chantal  
Gaugain, Sally  
Gibbons, Ellen  
Gibbons, Robert  
Glasford, Raymon  
Glasgow, Troy  
Gletsu, David  
Goodchild, Koa  
Grant, Tracy  
Green, Amy  
Green, Pauline  
Grewal, Sophie  
Griffiths, Anne  
Gringley, Sheila  
Grissette, Allan  
Grosso, Jane  
Hales, Linda  
Hardtman-Gardner, Ardette  
Harrell, Jason  
Harris, Katherine  
Harris, Naomi  
Harris, Roseann  
Hart, Thelma  
Hassell, Maria  
Haynes, Melissa  
Hayward, Rachael  
Higham, Gabrielle  
Hines, Kimberley  
Hinton, Mark  
Hizon, Venessa  
Hoey, David  
Howes, Ry  
Hubbard, Elliot  
Hunt, Robin  
Inniss, Shireen  
International FC Stone Ltd. UK  
Irvine, James  
Johnson, Neil  
Jones, Eulene  
Jones, Winifred  
Joseph, Sherwin  
Judge, Ethel  
Julio, Malodie  
Katzsch, Matthew  
Kemp, Andrew  
Kempe, Julia  
Kempe, Megan  
Kennedy, Jacqueline  
Kieljan, Stephanie  
Kings, Rachael  
Koban, Helmut  
Kowalski, Tania  
Lambe, Angela  
Lambert, Anna-Lee  
Landy, Jewel  
Laxx, Sebastien  
Leader, Earl  
Lee, Peter  
Lewin, Virloy  
Lewis, Troy  
Lindo, Melissa  
Lister, Mike  
Little, Josephine  
Longobardi, Frank & Nelly  
Longworth, Meghan  
Lottimore, Sueallen  
Macdonald, Riley  
Maddock, Gareth  
Maddock, Sarah  
Mandalia, Ashay  
Manders, Nikia  
Mansfield, Julia  
Maranzana, Karen  
Martin, Kate  
Maru, Nina  
Matthews, Steph  
Maude, Ollie  
Maybury, Sheldon  
McGill, Caroline  
McGlynn, John  
McGrann, Mark  
McHardy, Hattie  
McLean, Ken & Bev  
McLeod, Okeeno  
McPhail, Aidan  
McRonald, Julie  
Mello, Christine  
Menzies, Jeannine  
Meyer, Carl  
Miller, Gail  
Miller, Karen  
Mills, Shekani  
Minors, Lejay  
Minors, Shakisha  
Molina, Matias  
Monkman, Lucy  
Moore, Janet  
Morrisey, Shane  
Morton, Kairo  
Mozley, Lee  
Mullan, Shirley  
Munshi, Manish  
Musso, Stephen  
Musson, Christina  
Nair, Shyam  
Nash, Mark  
Nearon, Mervin

# Thank you

## **Under \$100 - because every dollar counts**

Nearon, Valerie  
Nefdt, Kevin  
Nelson, Maria  
Nicolette, Nicolette  
Oliveira, Leanne  
Ongel, Cansu  
Osborne, Richard & Leeann  
Osborne, Yvonne  
OSullivan, Diarmaid  
O'Sullivan, Melissa  
Oswald, Apryle  
Ottley, Dennis  
Outerbridge, Calisha  
Outerbridge, Shawnette  
Pacheco, Brianna  
Palfrey, Nick  
Panchaud, Jennifer  
Parr, Chenoa  
Peacock, Esther  
Pearman, Juliet  
Pedrera, Melissa  
Percy, Claire  
Pereira, Nikki  
Pesci, Marco  
Phillips, Jennifer  
Pimental, Lezlie  
Pimentel, Nelia  
Powell, Charlotte  
Quig, Marc  
Railton, Wendy  
Ratteray, Birdie  
Ratteray, Pahn-ya  
Raynor, Angela  
Raynor, Judith  
Raynor, Tanya  
Reardon, Pat  
Rego-Raposo, Grace  
Renaud, Oriana  
Richards, Joy  
Richardson, Darren  
Richardson, Kent  
Richards-Vance, Sandra  
Robinson, Chantal  
Robinson, Julesa  
Robinson, Shyvonne  
Rodrigues, Angela  
Rogers, Kathy  
Roy, Hunter  
Rufiange, Ross  
Sacre, Barbara  
Salaam, Kandra  
Saltus Grammar School  
Sanguinetti, Jack  
Saunders, Beverly  
Saunders, Toyo  
Savage, Marisa  
Sewell, Brittany  
Shahim, Eva  
Shepherd, Rebecca  
Silva, Deanice  
Simas, Joseph  
Simmons, Andrea  
Simmons, Arlene  
Simmons, Carla  
Simmons, Roslyn

Simmons, Shirley  
Simons, Jason  
Sims, Karen  
Skinner, Christine  
Smith, Barbara  
Smith, Betty  
Smith, Carolyn  
Smith, Chevonne  
Smith, Colisha  
Smith, Corliss  
Smith, Ellen  
Smith, Gayvonne  
Smith, Genae  
Smith, Gina  
Smith, Gordon  
Smith, JoAnne  
Smith, Johnette  
Smith, Keira  
Smith, Rosa  
Smolij, Walter  
Sobhana, Poornima  
Sound In Theory  
Sousa, Melanie  
Springer, Dawn  
Stedman, Charlotte  
Steele, Candace  
Stephenson, Sue  
Stirling, Helen & Jackie  
Superina, Lynn  
Sura, William  
Swan, Ercinda  
Swan, Jerri-lee  
Swan, Milika  
Symonds, Lozendro  
Talbot Smith, Jane  
Talbot, Lisa  
Tannock, Danielle  
Tartaglia, John & Belinda  
Tassel Bermuda  
Taylor, Linda  
Terceira, Penny  
Terceira, Vesna  
Tester, Katie  
Thomas, Derek  
Thomas, Susan  
Todd, Lauren  
Toope, Jennifer  
Touscher, Sandra  
Trott, Carolyn  
Trott, Christina  
Trott, Conway & Jessica  
Trott, Linda  
Trott, Marletha  
Trott, Opral  
Trott, Pamela  
Trott, Phyllis  
Tucker, Jasmyn  
Tucker, Tamra  
Tucker, Violet  
Tygh, Nicole  
Undercover Tent Rentals  
Ustaran, Eduardo  
Varwandkar, Manjit  
vov Herberstein, Mary Margret  
Wachira, Lee  
Waddington, Mark  
Wade, Laurie

Warner, Sandra  
Webb, Ann  
Welch, Carolyn  
West, Louise  
West, Rena  
Widhalm, Paul  
Williams, Handsome  
Williams, Tamika  
Williams, Tina  
Williamson, Brett  
Williams-Hyde, Afnik  
Wilson, Karen  
Wilson, Keema  
Wilson, Renee  
Wilson-Johnston, Jahlunde'  
Wixtead, James  
Woolridge, Alisa  
Wright, Jasmine  
Wyer, Martin  
Yearwood, Ashley

"I give what I can because I know there's a chance I'll need the Centre's services someday, either for myself or a family member. I want them to continue advancing cancer care so that when the time comes, they'll be here to help."

# Board of Directors

NAME	NATIONALITY	POSITION	CREDENTIALS
Glen Gibbons	Bermudian	President	Insurance Executive, Retired
Judith White	Bermudian	Vice President	Insurance Executive, Retired
Tamara Anfossi	Bermudian	Director	Assistant Director, BMA
Gary Carr	Bermudian	Director	Non-executive Director
Dr. Chris Fosker	British (SOB*)	Director	Medical Director & Clinical Oncologist, BCHC**
Jennifer Haworth	Bermudian	Director	Director & Head of Dispute Resolution, MJM Limited
Dr. Monica Hoefert	Canadian	Director	Physician, Practice of Dr. Monica Hoefert
Lynda Davidson Leader	Bermudian	Director	Chief Underwriting Officer, Park Indemnity Limited
Melody Johnson	Bermudian	Director	AWAC Services Company (Bermuda), Ltd.
Valerie Smart Platt	Bermudian	Director	Non-executive director, various Old Mutual plc subsidiaries
Lorenzo Ratteray	Bermudian	Director	Group Head of Consumer Solutions at BF&M
Lynne Woolridge	Bermudian	Director	Chief Executive Officer, BCHC**

\*SOB spouse of Bermudian

\*\*BCHC Bermuda Cancer and Health Centre

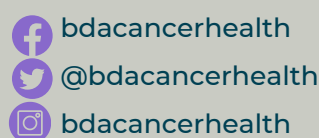
## Contact Us

## Senior Management Team

NAME	POSITION	PHONE	EMAIL
Lynne Woolridge	Chief Executive Officer	236-0947	lwoolridge@chc.bm
Dr Chris Fosker MBChB, BSc, FRCP, FRCR	Medical Director & Clinical Oncologist	236-7035	cfosker@chc.bm
Lisa Ty	Chief Financial Officer	236-1297	lty@chc.bm
Katrina Darrell	Chief Administrative & Compliance Officer	236-7029	kdarrell@chc.bm
Deborah Titterton Narraway	Chief Marketing & Fundraising Officer	236-0949	dnarraway@chc.bm

46 Point Finger Road  
Paget, DV 04  
Bermuda

1 (441) 236-1001  
[www.chc.bm](http://www.chc.bm)



Registered charity number: #070  
Company number: 40121